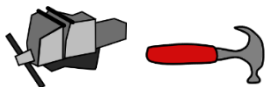
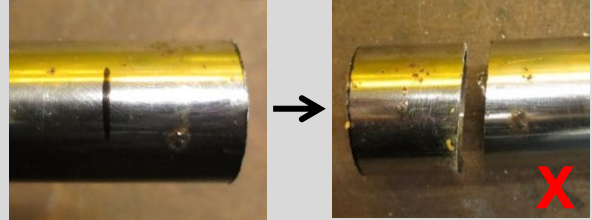
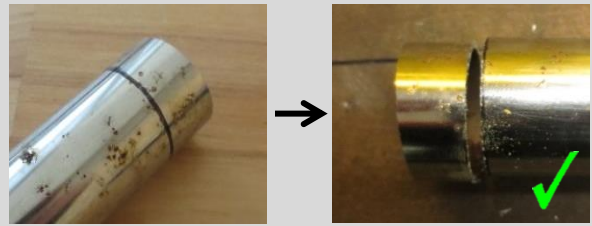


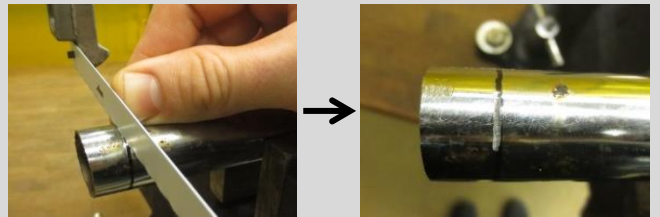
IDIN Skill Builder: Bicycle Hacksaw Participant Guide



Mark the entire cut line to ensure a straight cut.



Use a thumb to stabilize the blade while initiating the cut.

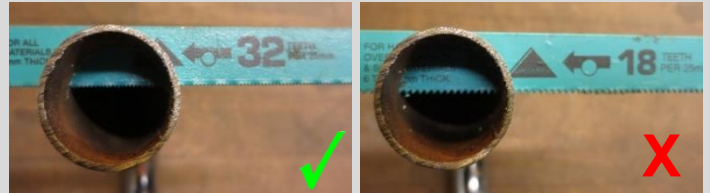


No thumb



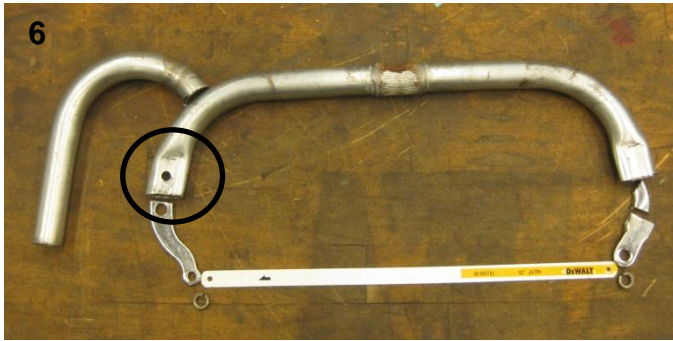
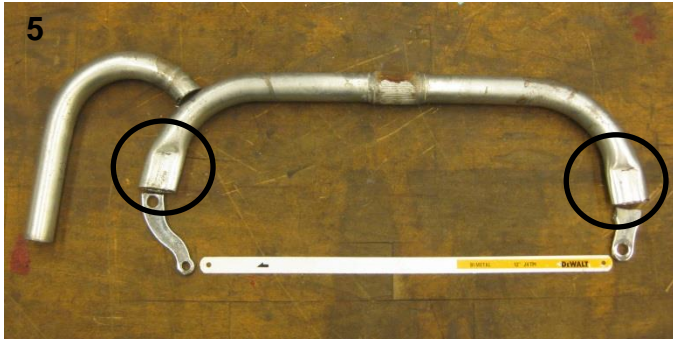
Let the saw do the work.

More teeth for thinner material.



Apply force in the cutting direction only.

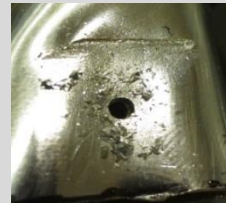




Use a punch.



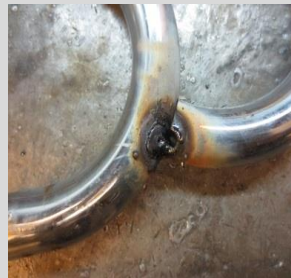
Work your way up in size, with 50% increments.



Fixture the parts so they are secured to each other and the work surface.



Manage the current to avoid burning through the material.



Tack to lightly secure the pieces. Evaluate the orientation. Adjust if needed by breaking the tack.

